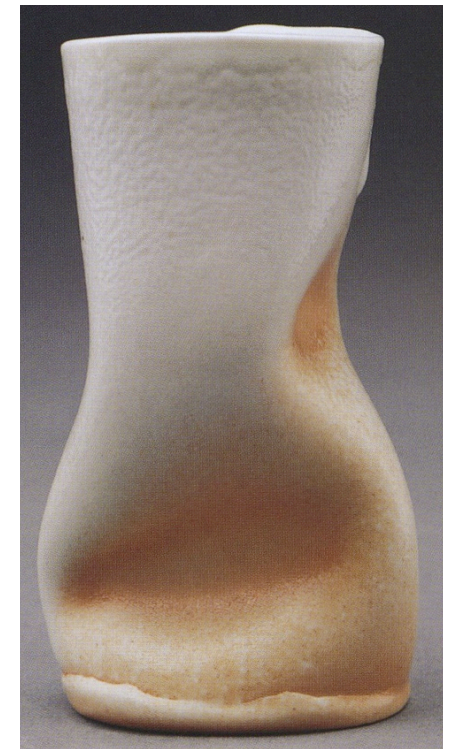




Ceramic Cups:

inspiration for decoration

We can decorate through:



glaze (colour):
pattern, design, colour scheme

texture

form
(shape)



DAVIE RENEAU
Tea Bowl with Assiette, 2003

4½ x 3 x 3½ in.
(11.4 x 7.6 x 8.9 cm)
Wheel-thrown and hand-built
porcelain and stoneware;
anagama fired, cone 11
Photo by Bob Payne

THIS PIECE IS ABOUT THE CONTRAST
BETWEEN THE PRECISE CUTS OF THE TEA
BOWL AND THE RIPPED, TORN EDGES OF
THE ASSIETTE, WHICH WAS MADE FROM A
CRUNCHY LOCAL STONEWARE.



BARBARA KNUTSON

Footed Cup, 2000

4 x 5 x 3½ in. (10.2 x 12.7 x 8.9 cm)

Slab-built white stoneware; reduction fired, cone 10; pressed spirals, rolled dots, hollow handle

Photo by Tim Barnwell



JOANNA STECKER
Leaf Teacup Set, 2003

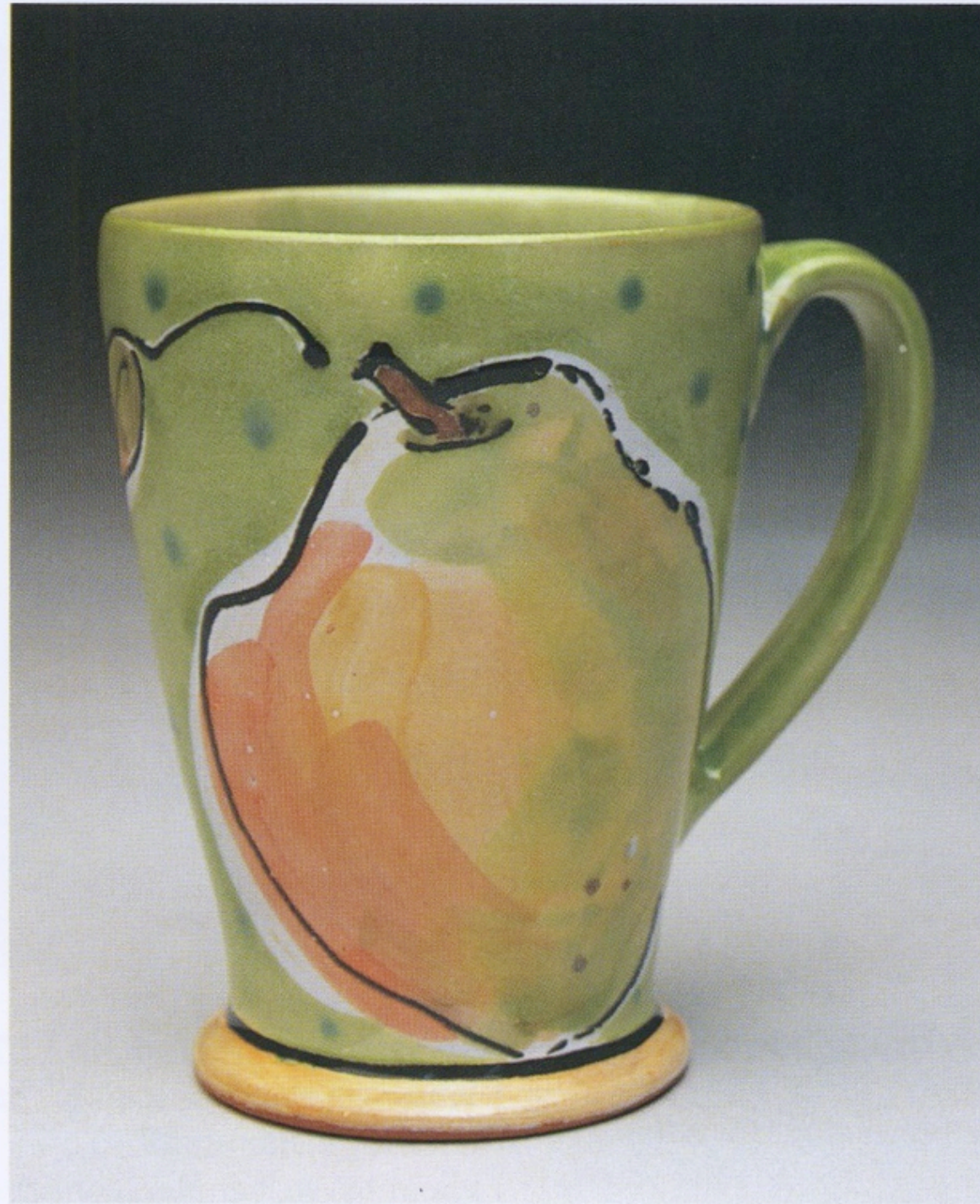
4 x 6 x 6 in. each (10.2 x 15.2 x 15.2 cm)
Thrown and hand-built porcelain; salt
fired, cone 10
Photo by artist



LISA KARMAZIN | 6 x 5 x 4 in.
(15.2 x 12.7 x 10.2 cm)
Cup and Saucer, 2001
Wheel-thrown and
altered porcelain; electric
oxidation, cone 6
Photo by David Harrison



NENA ESCOBAR | 5 x 3½ x 5 in. each
(12.7 x 8.9 x 12.7 cm)
360° Cups, 2003
Wheel-thrown porcelain;
oxidation fired, cone 9
Photo by artist



WYNNE WILBUR
Warm Pear Cup, 2003

5 x 4½ x 3 in.
(12.7 x 11.4 x 7.6 cm)
Wheel-thrown terra cotta; electric
fired, cone 03; majolica
Photo by artist



KAREN NEWGARD

Cups, 2004

5 x 3 $\frac{1}{2}$ x 3 $\frac{1}{2}$ in. each (12.7 x 8.9 x 8.9 cm)

Wheel-thrown porcelain; salt fired, cone 10;
terra sigillata, sgraffito

Photo by Walker Montgomery



KARIN SOLBERG

Cups, 2003

4 x 3 x 3 in. each (10.2 x 7.6 x 7.6 cm)

Thrown and altered porcelain; salt
fired, cone 11; inlaid slips with glaze

Photo by artist



JANICE MANN

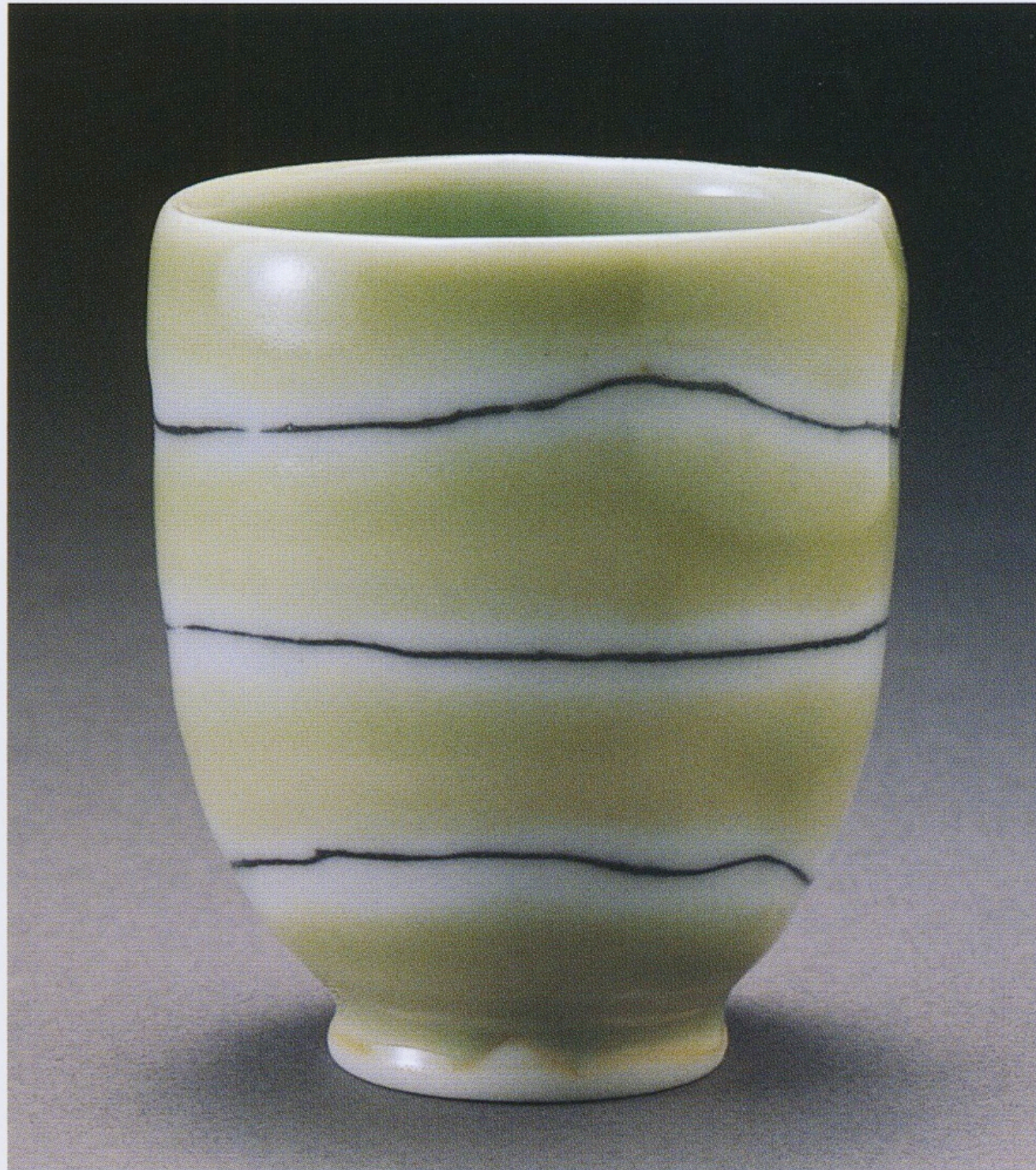
Bulls-eye, 2004

4 x 4½ x 4½ in.

(10.2 x 11.4 x 11.4 cm)

Wheel-thrown, altered, and
carved porcelain; salt fired,
cone 10; underglaze and glazes

Photo by Lee Schwabe



KELLY O'BRIANT

Little Cup with Lines, 2003

2½ x 1½ x 1½ in.
(6.4 x 3.8 x 3.8 cm)

Wheel-thrown porcelain;
methane gas fired, cone 10½;
terra sigillata, celadon glaze

Photo by Tom Mills



JODY WEBER
Cup and Saucer, 2002

4½ x 7 x 7 in. (11.4 x 17.8 x 17.8 cm)
Wheel-thrown and stamped porcelain;
reduction fired, cone 10
Photo by artist



ELIZABETH ANNE KENDALL

Torso Cup, 2003

4 x 2½ x 2 in. (10.2 x 6.4 x 5 cm)
Slab-built porcelain; wood/soda
fired in reduction; Bourry kiln fired,
cone 11; white satin matte glaze;
soaked in soda ash solution

Photo by artist

BOTH THE CHEMISTRY OF THE
PORCELAIN/SODA ASH COMBINATION AND
THE PHYSICAL UNDULATIONS OF THE
BENDING SLAB WORK TOGETHER TO
CAPTURE A BLUSH OF ORANGE. THIS SOFT
GLOW, FADING IN AND OUT AROUND THE
FORM, IS A RECORD OF THE LONG, SLOW
FLAME OF THE WOOD-BURNING KILN.



ILENE MAHLER
Crystalline Teacup, 2003

3³/₄ x 4 x 4¹/₂ in.
(9.5 x 10.2 x 11.4 cm)
Thrown porcelain; oxidation
fired, cone 10
Photo by R.J. Phil



1226A BERNADETTE CURRAN
Animal Hybrids Tumblers, 2003

6 x 3 x 3 in. each (15.2 x 7.6 x 7.6 cm)
Thrown and hand-built porcelain;
electric fired, cone 6; layered colored
slips, terra sigillata, and glazes, cone 6
Photo by Jane G. Miller



CHLOË MARR-FULLER

Two Tumblers, 2003

Left: 5 x 3 x 3 in. (12.7 x 7.6 x 7.6 cm)

Right: 4½ x 3 x 3 in. (11.4 x 7.6 x 7.6 cm)

Wheel-thrown porcelain; gas fired, cone 10;
wax resist, oxide design, and inlay

Photo by Monica Ripley



JUDITH ARNOLD
Spring, 2003

4 x 3 x 3 in. each (10.2 x 7.6 x 7.6 cm)
Thrown earthenware; electric fired,
cone 04; Mason stains; multiple firings
Photo by artist



TODD HOLMBERG

Cup, 2002

3 x 3¹/₄ x 3¹/₄ in.

(7.6 x 8.3 x 8.3 cm)

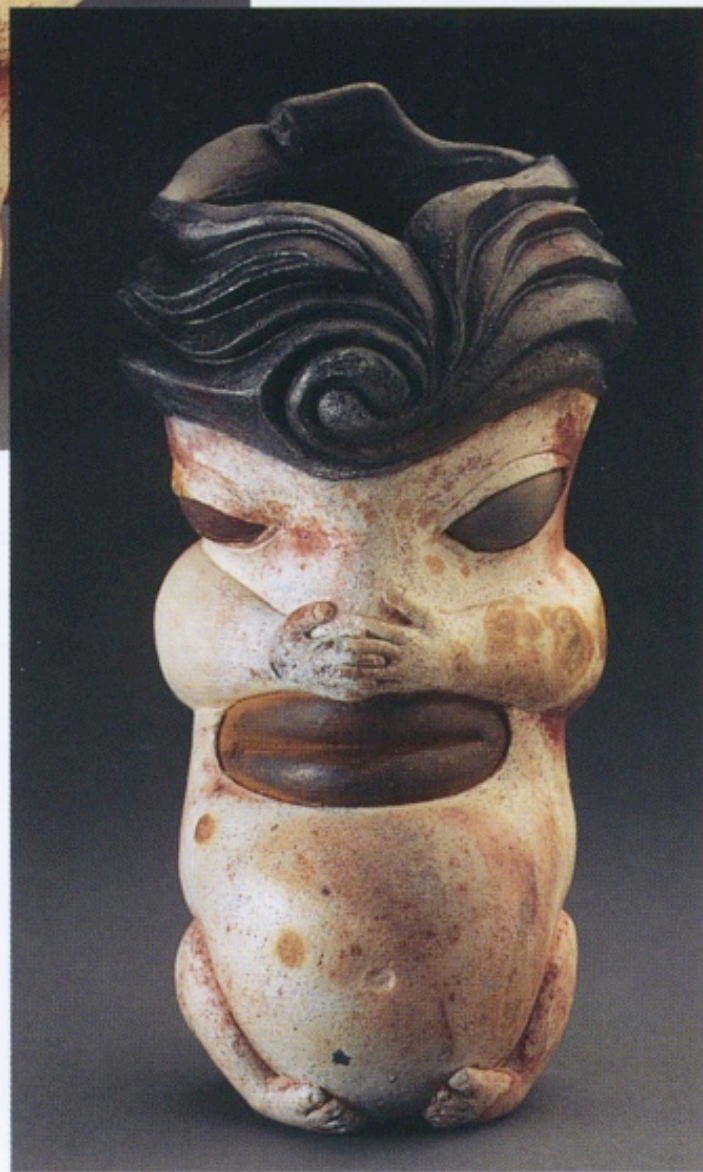
Wheel-thrown and altered
stoneware; gas fired in
reduction, cone 10

Photo by Peter Lee



NAOKO GOMI
Cylinder Cups: Turtle Motif, 2003

5 x 2½ x 2½ in. each
(12.7 x 6.4 x 6.4 cm)
Slab-built colored porcelain;
electric fired, cone 9
Photo by artist



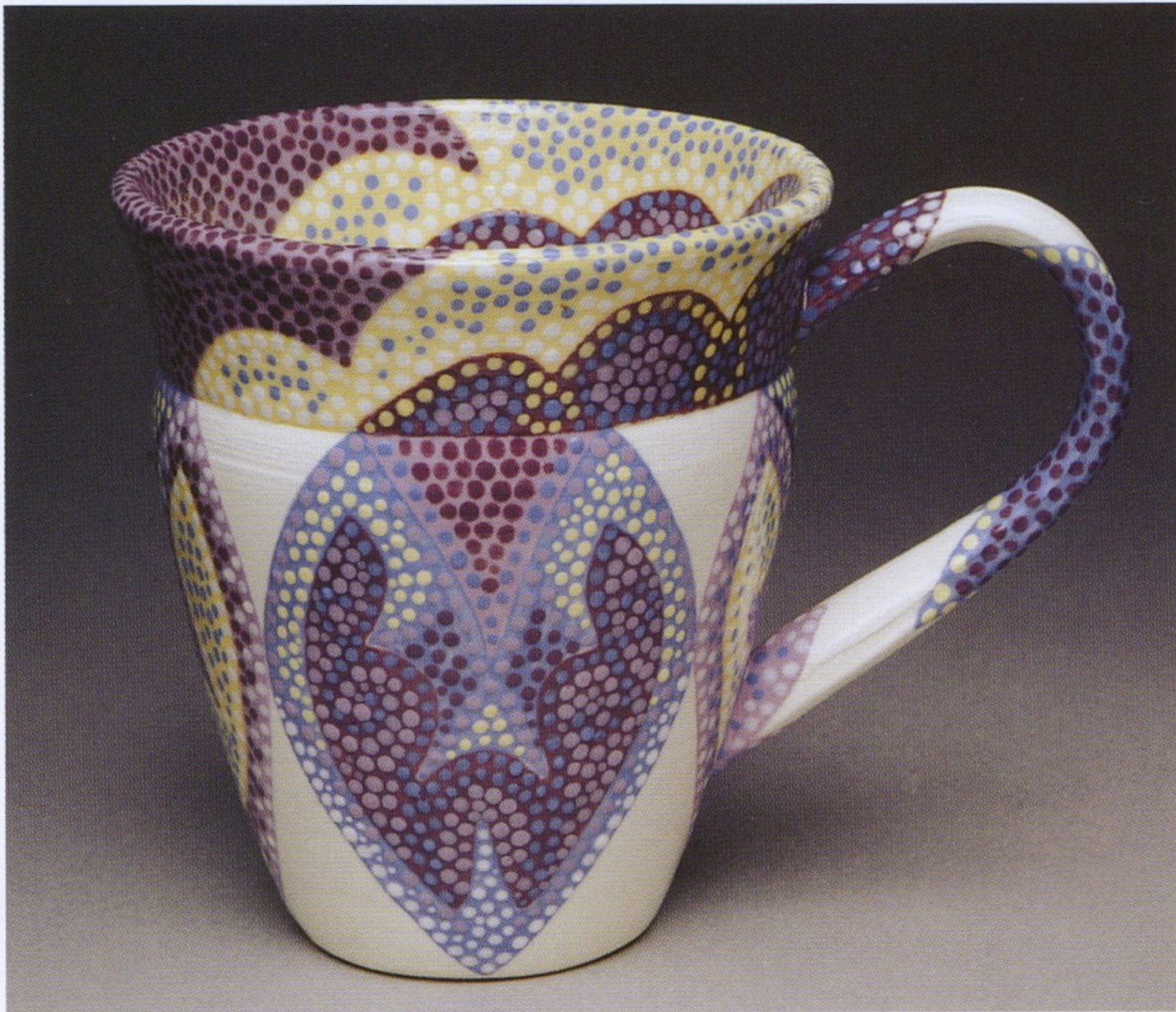
SHIGERU MIYAMOTO
*Tropicopolitan
Drinking Vessel*, 1999

8½ x 6¼ x 4¼ in.
(21.6 x 15.9 x 10.8 cm)
Coil-built stoneware; pit fired
Photos by Brad Goda



JENNY MENDES
*Toothy Two-Faced
Cup*, 2002

4¾ x 3 x 3 in.
(12 x 7.6 x 7.6 cm)
Coil-built earthenware;
electric fired, cone 02;
terra sigillata; black
wash over incised lines
Photo by Heather Protz



THERESA PUFFER

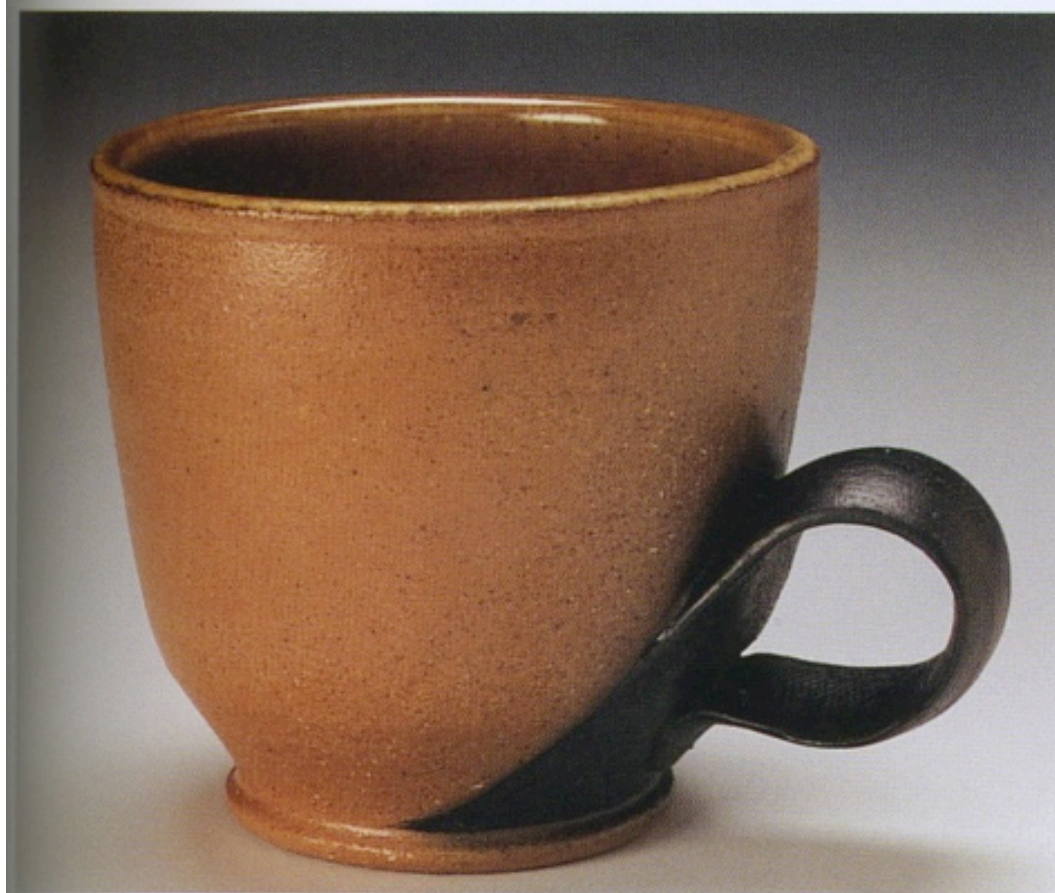
Rudy, 2004

4½ x 5¼ x 3 in.

(11.4 x 13.3 x 7.6 cm)

Wheel-thrown earthenware; electric fired, cone 03; underglaze and glaze

Photo by Peter Lee



RANDY HINSON | 3 x 4 x 3 in.
(7.6 x 10.2 x 7.6 cm)
Teacup, 2002 | Wheel-thrown stoneware;
salt fired, cone 10
Photo by Lynn Ruck



NAN COFFIN | 3 x 5 x 4 in.
(7.6 x 12.7 x 10.2 cm)
I'm Seeing Spots #1, 2003 | Wheel-thrown porcelain;
downdraft gas fired in
reduction, cone 10
Photo by Richard Burkett

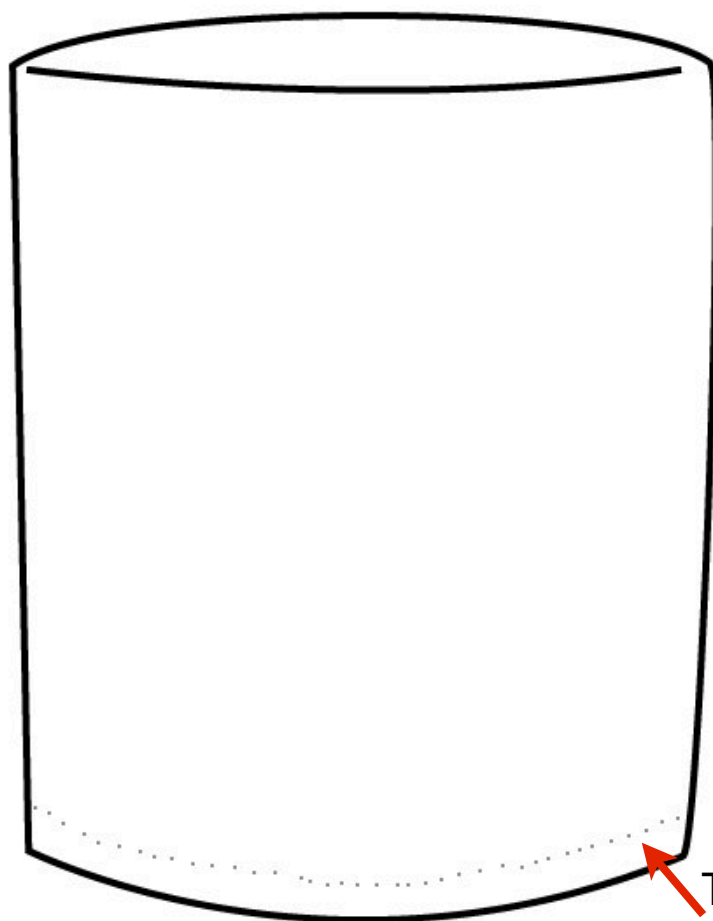


REENA KASHYAP
Pair of Drips, 2004

3³/₄ x 9¹/₂ x 2³/₄ in. each (9.5 x 24.1 x 7 cm)
Wheel-thrown and altered porcelain;
gas fired in reduction, cone 10;
trailed white satin matte and
Byron's Oxblood glazes
Photo by artist

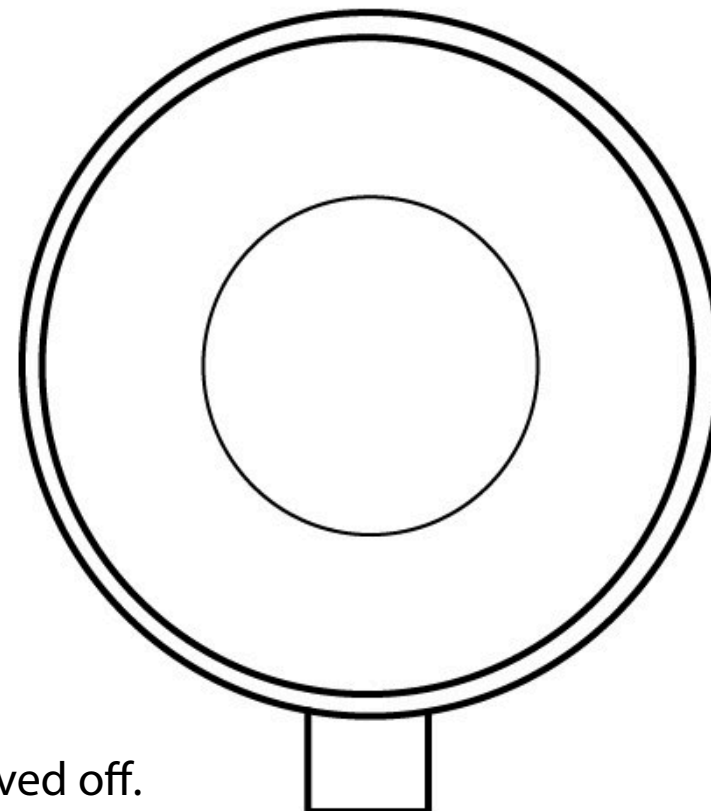
You should create a **plan** for your ceramic cup. Draw a handle design and add colour on the planning sheet provided you.

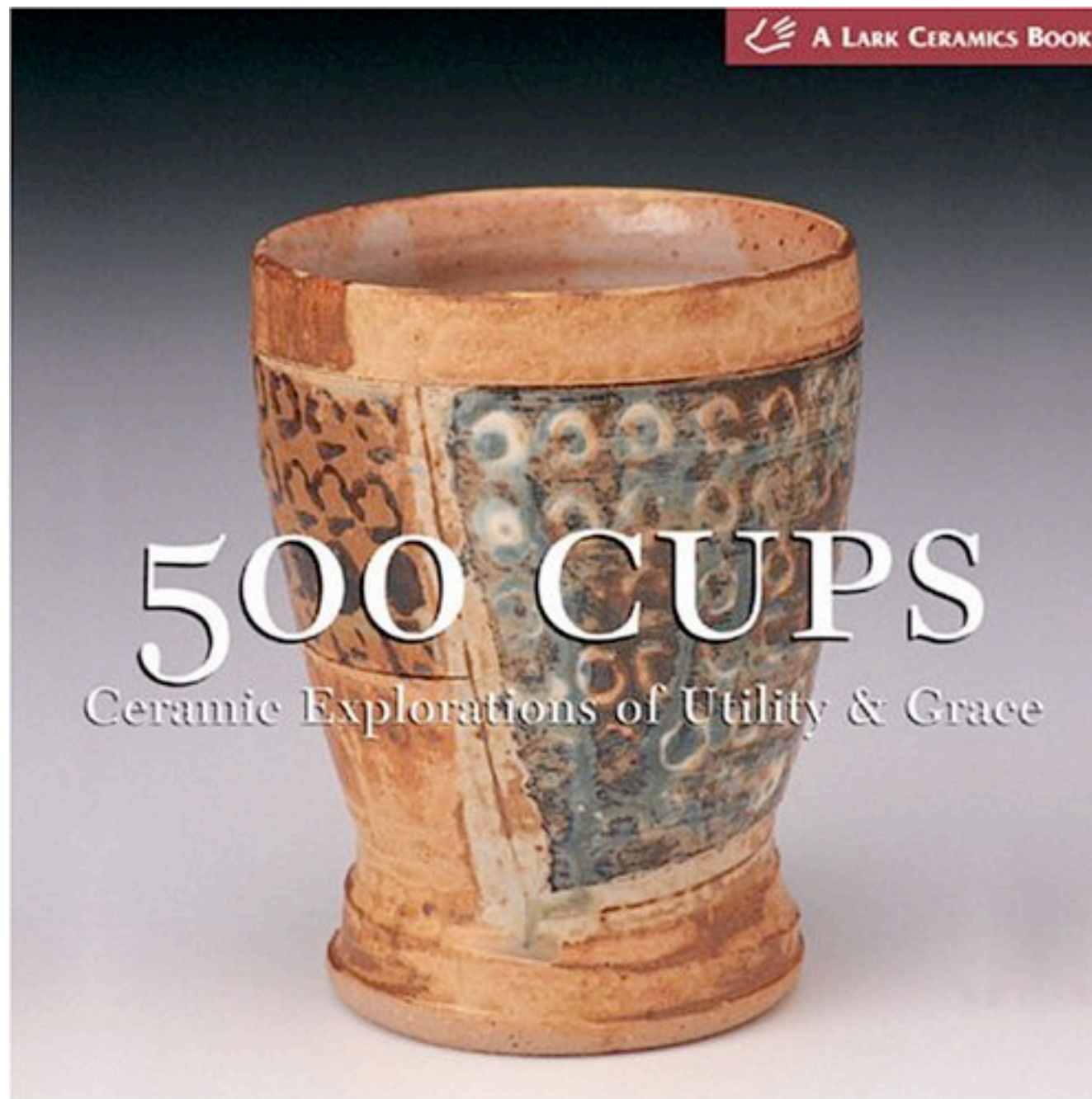
When planning your work, consider how you can decorate your design through **colour**, **texture** and/or **form**.



This area will be carved off.
It will be the foot of the cup.

aerial view of cup





photos have been scanned from this book

for educational purposes only