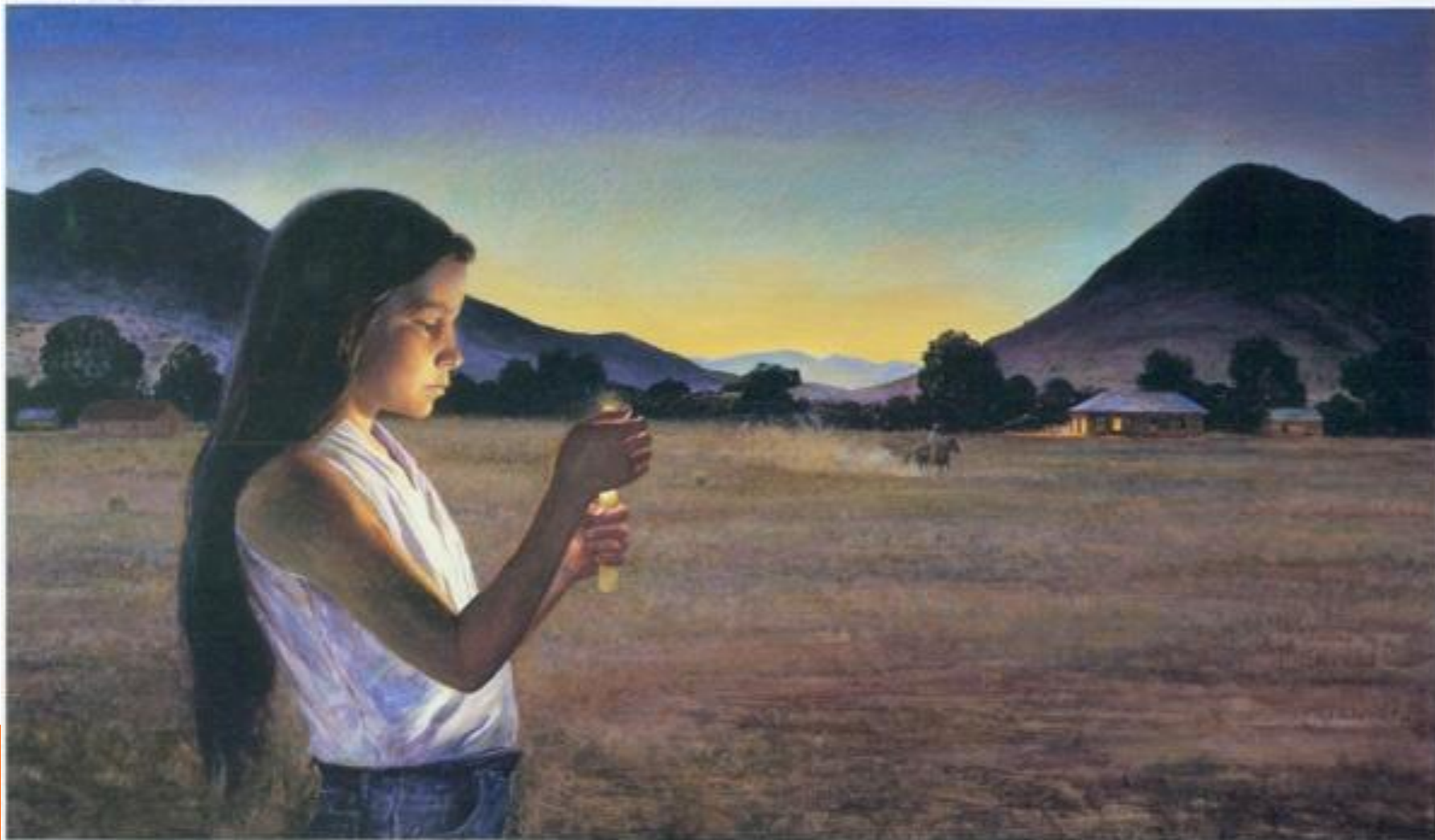


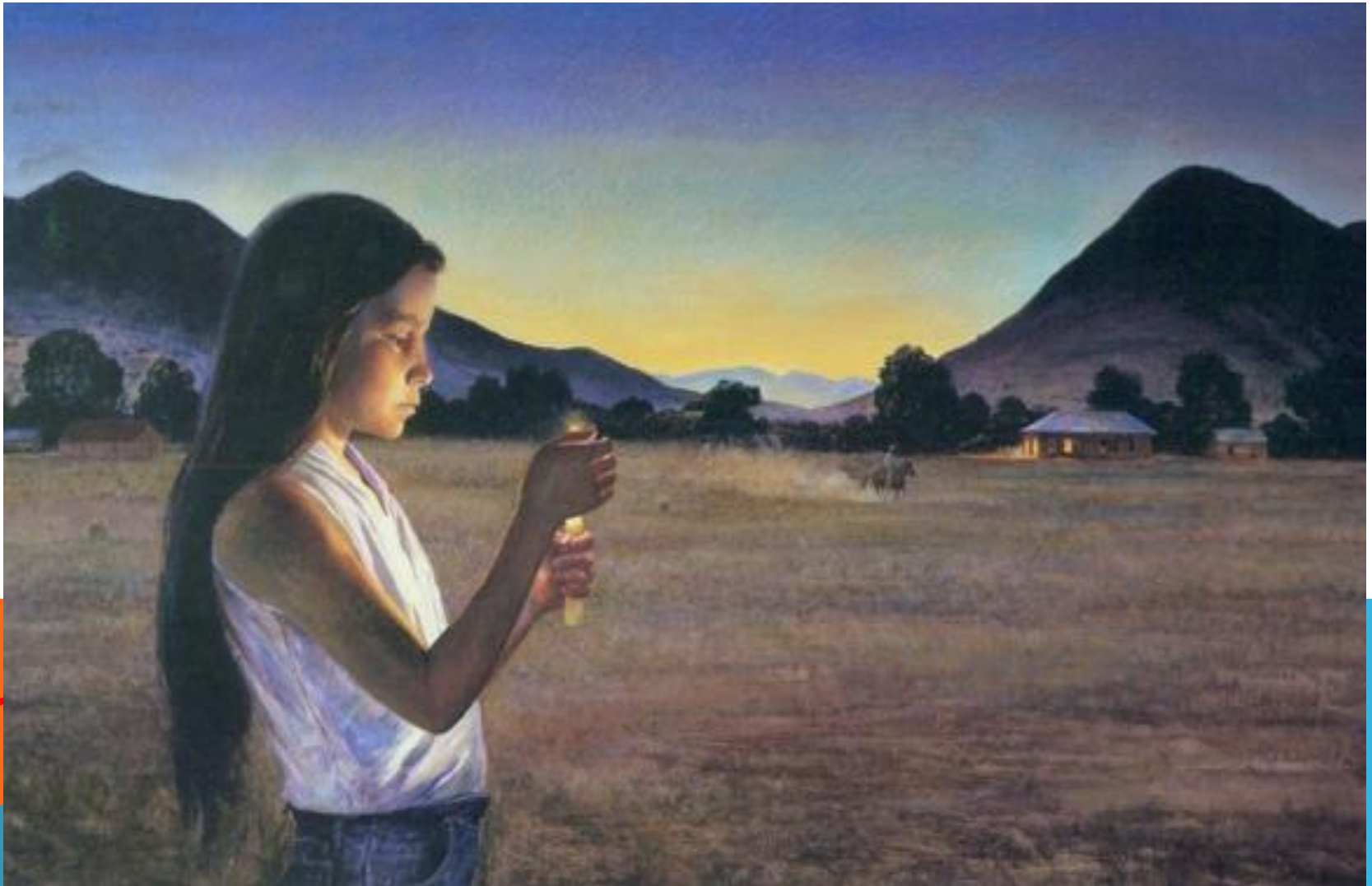
**LANDSCAPE**  
ILLUSION OF SPACE

San Diego Museum of Art, California.



*Eve of St. John* by Peter Hurd (1960). Tempera on canvas.

**WHICH IS BIGGER? THE GIRL OR THE PERSON RIDING A HORSE OR THE HOUSE? WHAT IS THE SIZE TELLING US?**

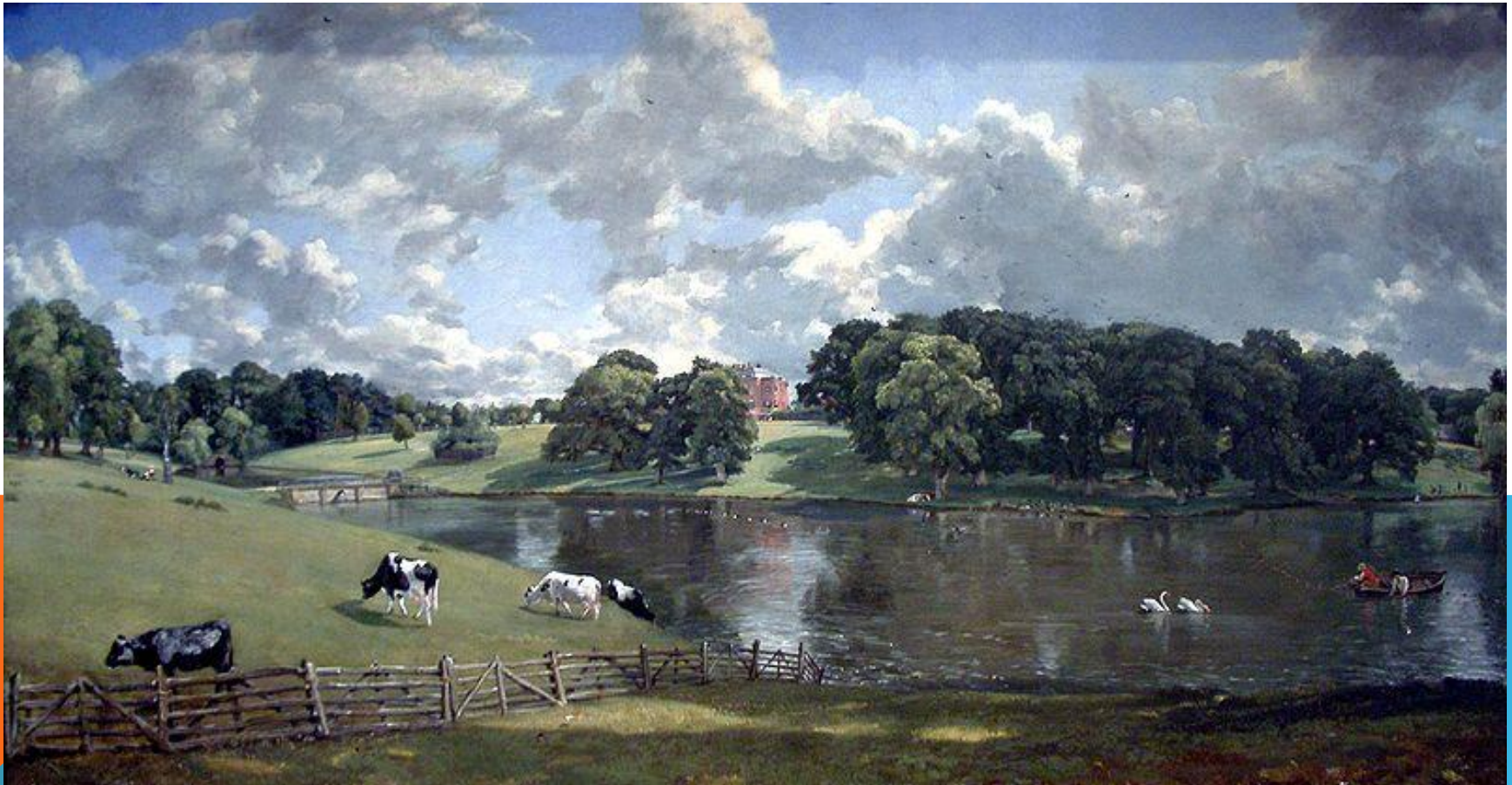


**WHICH BOX IS IN THE FOREGROUND, MIDDLE GROUND, AND BACKGROUND?**





**WHAT DO YOU SEE IN JOHN CONSTABLE'S  
PAINTING TITLED *WIVENHOE PARK, ESSEX*?  
WHERE IS THE HORIZON LINE? CAN OBJECTS  
CROSS THE HORIZON LINE INTO THE SKY?**



**WATER, SUCH AS RIVERS AND LAKES, ARE OFTEN SHOWN IN LANDSCAPES.**





**IS THE WATERWAY GETTING WIDER  
OR NARROWER AS IT APPROACHES  
THE BOTTOM OF THE CANVAS?**



**LANDSCAPES OFTEN INCLUDE STUDIES OF WEATHER SUCH AS THE ARTWORK BELOW BY GEORGE INNESS TITLED *THE COMING STORM*.**



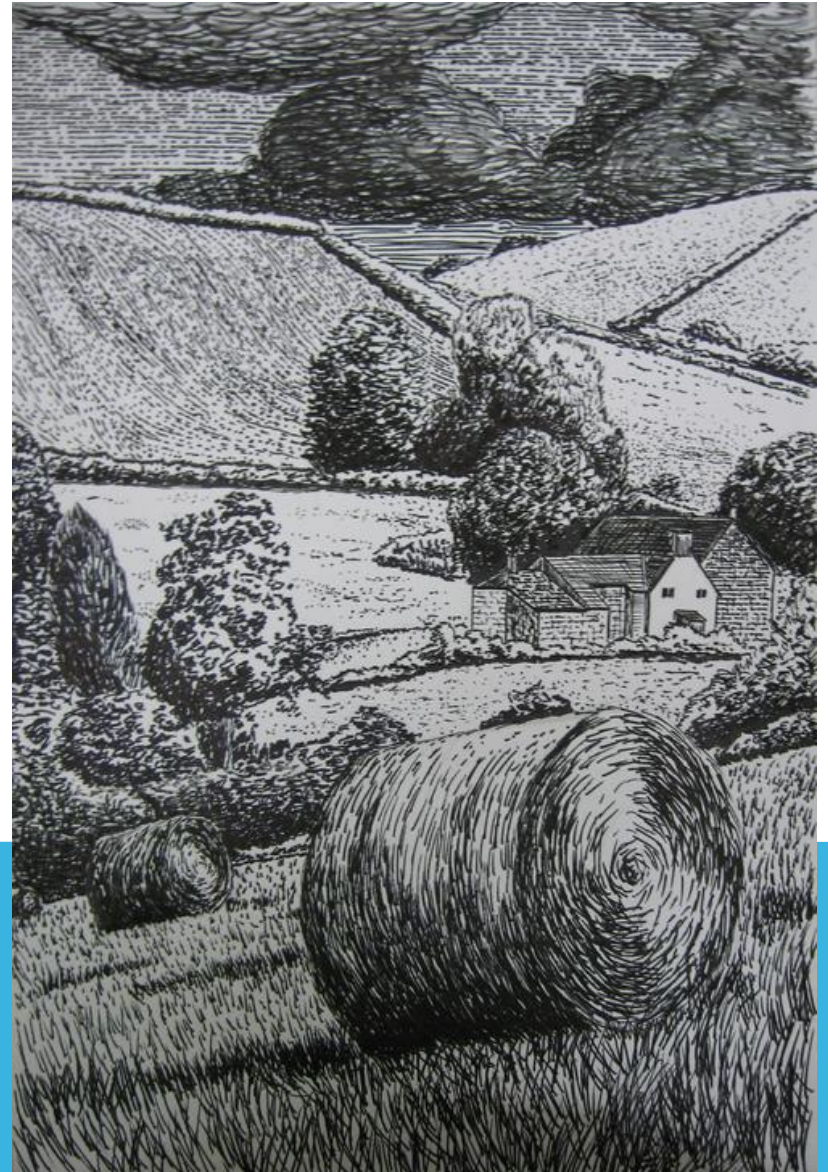


**WHAT TIME OF THE DAY WOULD YOU SAY IS DEPICTED IN THIS ARTWORK TITLED *THE OREGON TRAIL* BY ALBERT BIERSTADT?**





# COMPARE AND CONTRAST





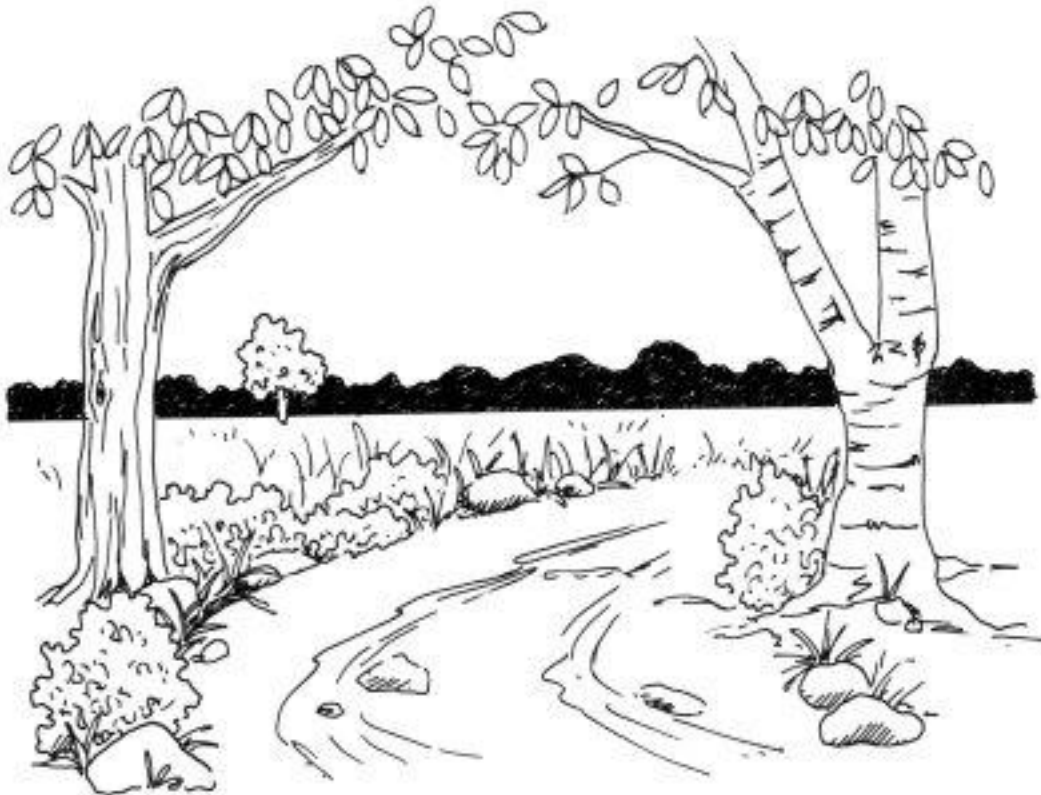
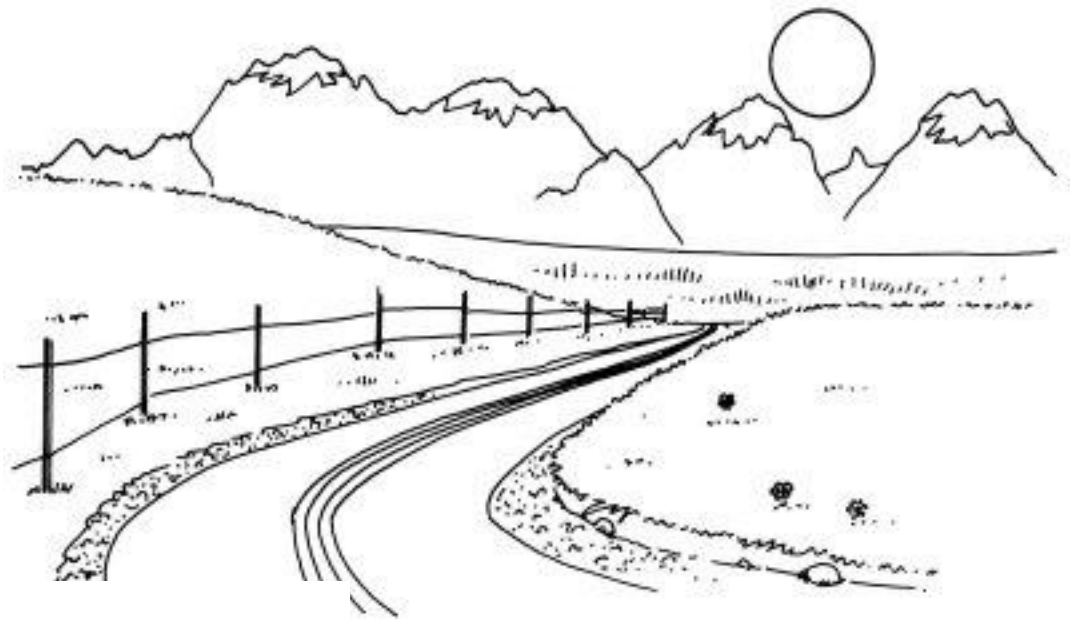




# USING LINES TO INDICATE TEXTURES AND FORMS.



# LANDSCAPE DRAWING

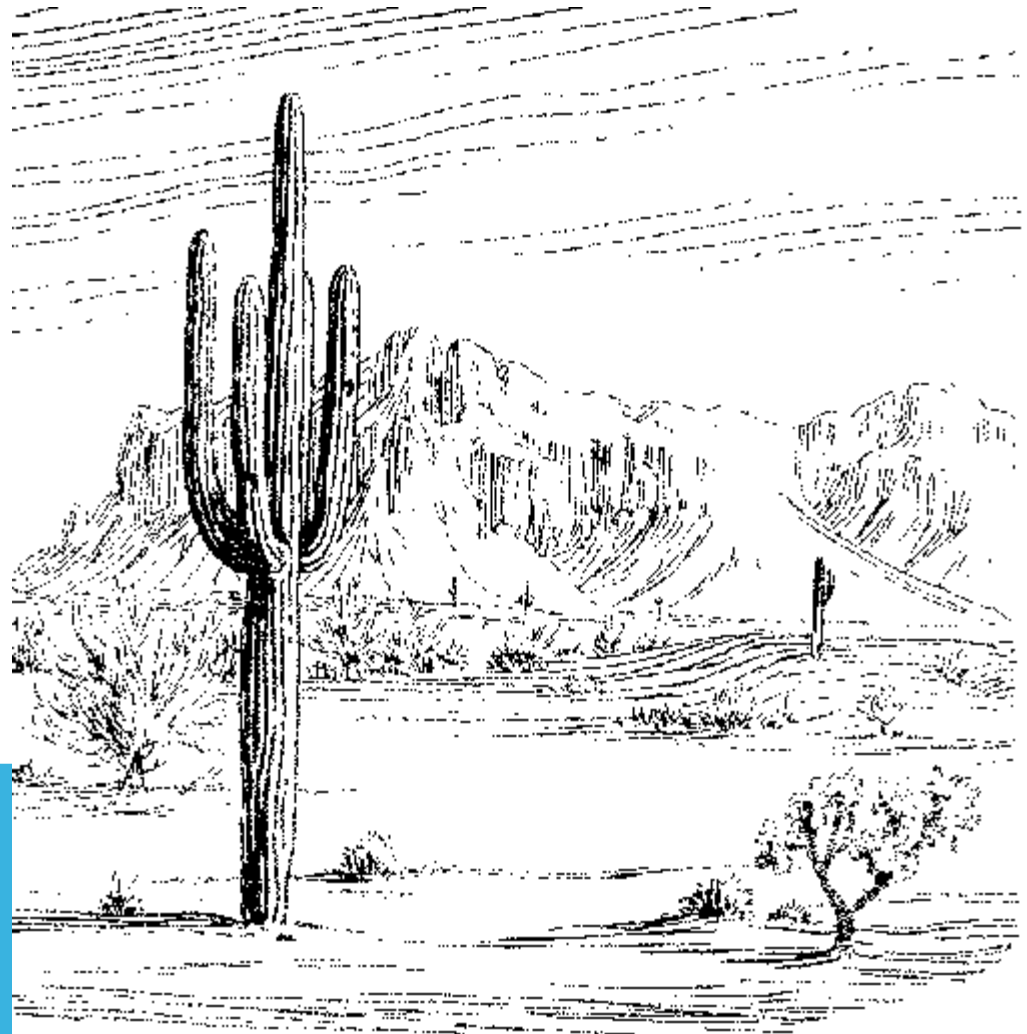
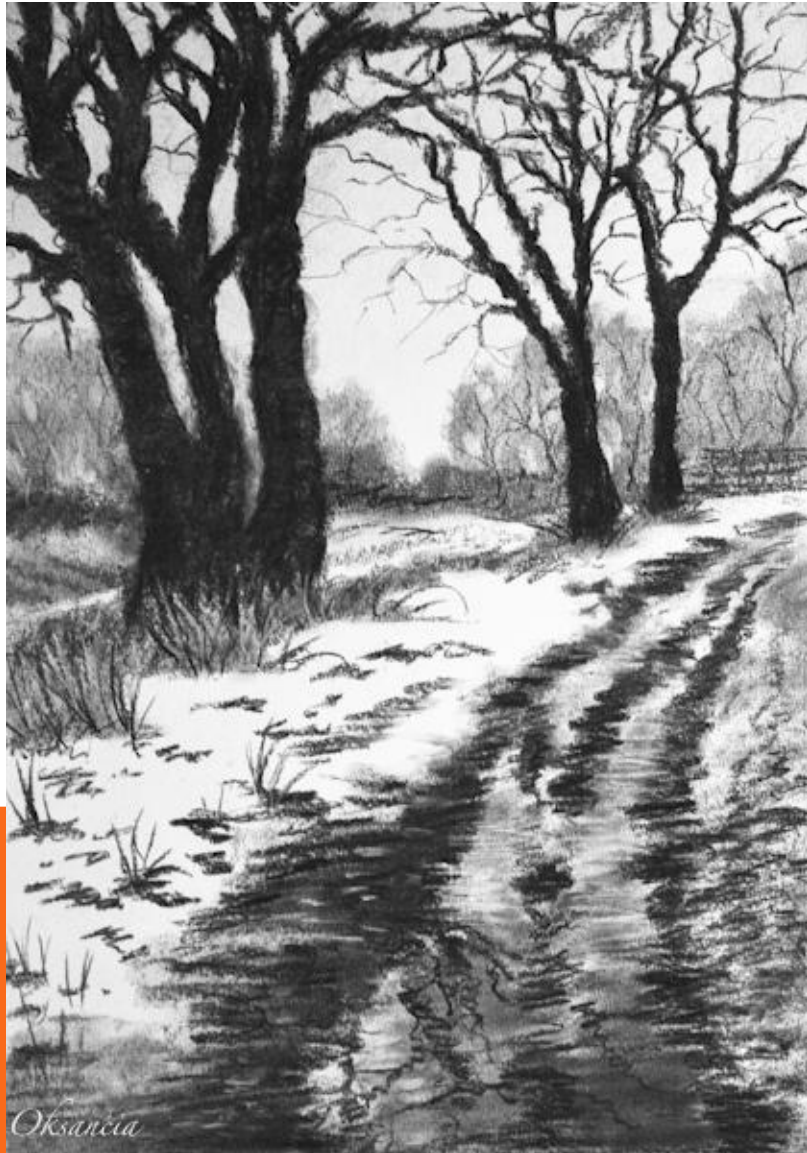








# YOUR WORK MUST SHOW USE OF SIZE AND PLACEMENT



# PRACTICE 6

## OF THESE LINES USING THE QUILL PEN



GILLOTT'S 290



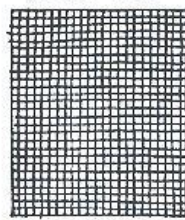
GILLOTT'S 290



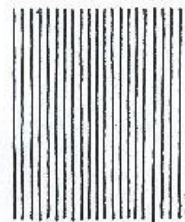
GILLOTT'S 1290



HUNT 102



GILLOTT'S 303



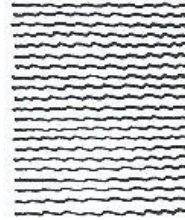
GILLOTT'S 170



HUNT 513



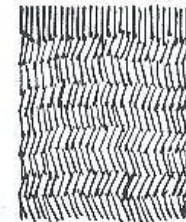
GILLOTT'S 290



GILLOTT'S 303



B5



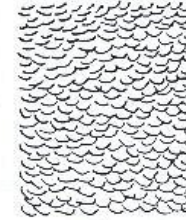
GILLOTT'S 170



GILLOTT'S 170



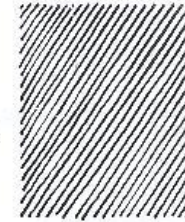
GILLOTT'S 404



GILLOTT'S 1066



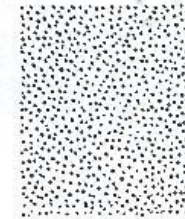
B5 1/2



GILLOTT'S 1290



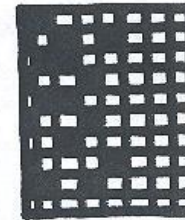
GILLOTT'S 1066



GILLOTT'S 170



GILLOTT'S 303



FB3



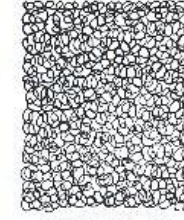
GILLOTT'S 1290



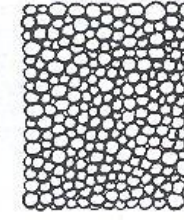
GILLOTT'S 290



HUNT 102



HUNT 102



GILLOTT'S 1290



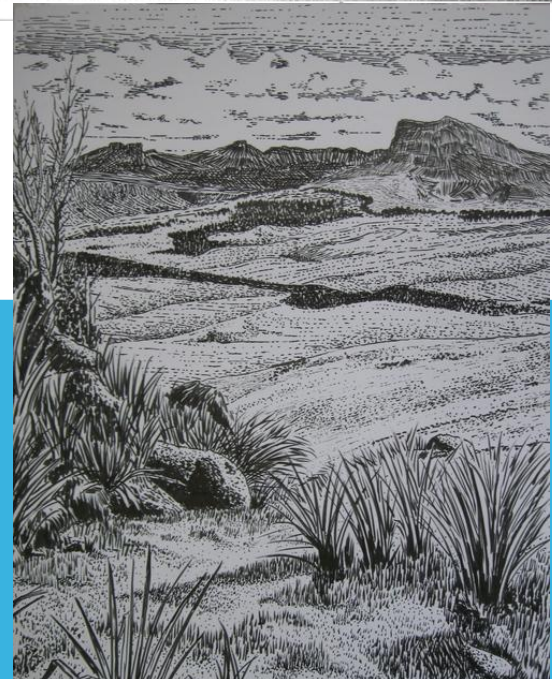
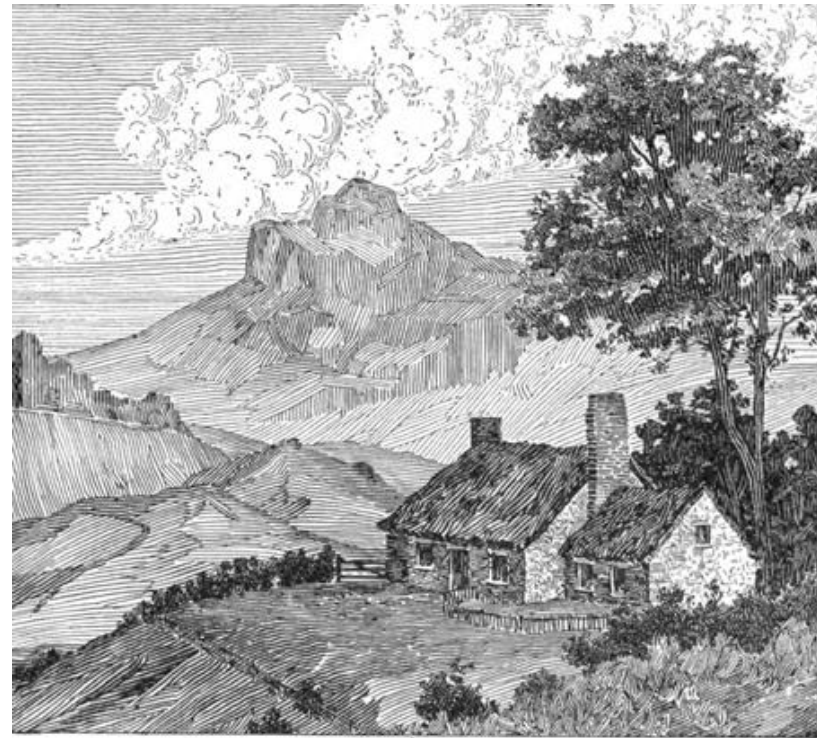




ENTIRE LANDSCAPE MUST BE  
FILLED WITH LINES.







**Value**



**Layer  
Lines**



# COMPARE AND CONTRAST



**Describe** –What do you see? What is the subject? List objects in the work.

**Analyze** – Lines, textures, color, shapes, space, value

**Interpret** – purpose, story, what's being expressed?



# LANDSCAPE LINE DRAWING

## REQUIREMENTS:

- A clear illusion of space is created by using size and placement within the three ground areas.
- Entire areas are filled with texture lines and lines that indicate values (no coloring).
- Evidence of at least 5 different texture lines.
- Careful craftsmanship.
- Creativity – Adding details and things to the artwork that make it original and personal to you.

